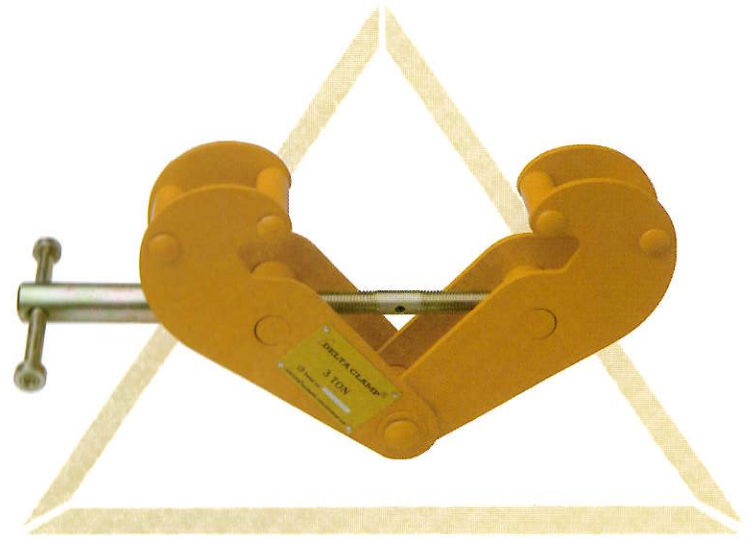



BEAM CLAMPS  
OPERATING INSTRUCTIONS

 **DELTA**<sup>®</sup> HOISTING EQUIPMENT  
Uiterdijk 6  
1505 GW Zaandam  
The Netherlands





## 1. Introduction


 **DELTA**® Beam clamps are in compliance with the safety factor and further safety requirements in conformity with the European Communities Machinery Directives 2006/42/EC.

Illustrations are for the general understanding and may differ from the actual versions.

These operating instructions must be carefully read and offered by every operator before use. This manual has to be available at all time at site.

 **DELTA**® reserve the right to change materials or design, if, in our opinion, such changes will improve our product. For the correct use of  **DELTA**® beam clamps, operation and maintenance instructions must be followed. Abuse, repair by an unauthorized person, or use of non  **DELTA**® replacement parts voids the guarantee and could lead to dangerous operation. This must be done annually by a qualified person.

## 2. Installation

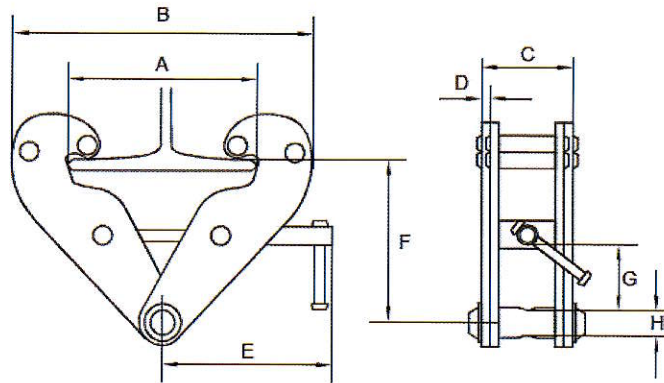
- a. Measure the actual beam width.
  - b. Install the  **DELTA**® clamp according to the beam width by turning the handle clockwise with force.
  - c. Make sure that is firmly tightened before use!
- ### 3. Instructions for the safe use of **DELTA**® beam clamps
- a. Using beam clamps safely. Ensure that the beam clamp is of the correct capacity for the load being lifted and that the beam will not be damaged by overloading.

- b. Ensure that the clamp is fitted correctly over the centre of gravity of the item being lifted and make sure it will not be subjected to side loading.
- c. Before lifting a load ensure that the clamp has been tightened and that the lifting appliance is fitted correctly into the eye of the clamp.
- d. Regarding In-service inspection and maintenance, ensure that beam clamps are kept clean and moving parts are lubricated.

## 4. Maintenance

- a. • The minimal maintenance requirements depends on the use of the product. A check-up and examination by a professional is required on a yearly basis.
- b. Regularly inspect beam clamps for wear, damage, distortion, cracks and any defects likely to cause a danger.
- c. If any of the above defects are found remove the beam clamp from service and refer to a competent person.

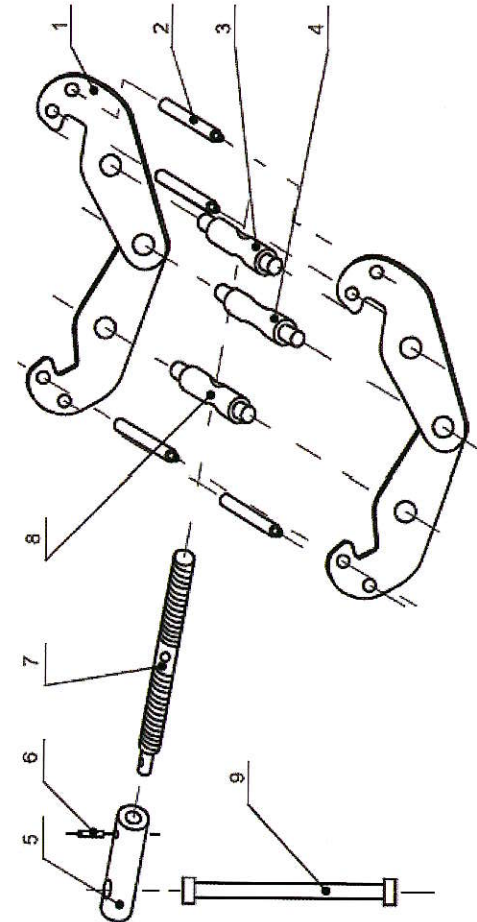
5. Technical data of **DELTA** beam clamps



| Safe working load kg | Adjustable beam width mm | A max mm | B      |        | C mm | D mm | E mm | F      |        | G mm | H mm |
|----------------------|--------------------------|----------|--------|--------|------|------|------|--------|--------|------|------|
|                      |                          |          | min mm | max mm |      |      |      | min mm | max mm |      |      |
| 1000                 | 75-220                   | 260      | 180    | 360    | 64   | 5    | 215  | 102    | 155    | 25   | 22   |
| 2000                 | 75-220                   | 260      | 180    | 360    | 74   | 6    | 215  | 102    | 155    | 25   | 22   |
| 3000                 | 80-320                   | 354      | 235    | 490    | 103  | 8    | 260  | 140    | 225    | 45   | 24   |
| 5000                 | 80-320                   | 354      | 235    | 490    | 110  | 10   | 260  | 140    | 225    | 45   | 28   |
| 10000                | 90-320                   | 365      | 320    | 505    | 120  | 12   | 280  | 170    | 235    | 50   | 40   |

6. Exploded view and part list of **DELTA** beam clamps

**BEAM CLAMP SPARE PARTS**



|                            |                          |                         |                          |
|----------------------------|--------------------------|-------------------------|--------------------------|
| 1. Side plate              | 2. Stay                  | 3. Lever thread spindle | 4. Equalizer pin         |
| 5. Lever handle link cover | 6. Socket head cap screw | 7. Screw mandrel        | 8. Dexter thread spindle |
| 9. Handle                  |                          |                         |                          |