



Editing Software for RMX-1000

remixbox

<http://pioneerdj.com/support/>

The Pioneer website shown above offers FAQs, information on software and various other types of information and services to allow you to use your product in greater comfort.

Operating Instructions

Contents

How to read this manual

The names of displays, menus, and buttons in this manual are enclosed in brackets. (e.g. [MASTER] channel, [ON/OFF], [File] menu)

01 Before start

- Loading the customized parameter data onto the RMX-1000..... 3
- Loading the customized parameter data onto an SD memory card..... 3

02 Part names and functions

- Loading customized parameter data onto the RMX-1000 (Sync)..... 5
- Importing customized parameter data loaded in the RMX-1000 (Update Setting) 5
- Exporting the customized parameter data and sampled sound sources to an SD memory card (Export)..... 5
- Importing customized parameter data and sampled sound sources from an SD memory card (Import)..... 6
- Managing the customized parameter data and sampled sound source..... 6

03 Editing Effects

- SCENE FX section..... 7
- ISOLATE FX section 8
- X-PAD FX section 9
- RELEASE FX section..... 10
- SAMPLER editing 11

04 Effect parameter adjustment ranges

- SCENE FX 12
- ISOLATE FX..... 13
- X-PAD FX 14
- RELEASE FX 14

05 Others

- Menu list..... 15
- About trademarks and registered trademarks 15
- Cautions on copyrights 15
- Using the support site 16

Before start

remibox is an editing software for changing the various parameters of effects on the RMX-1000 and creating your own customized parameter data. A computer is used to create the customized parameter data.

remibox can also be used to store sampled sound sources to be loaded in the [X-PAD FX] buttons onto SD memory cards.

- When connecting the RMX-1000 and the computer, do so directly using the included USB cable. Do not use a USB hub.

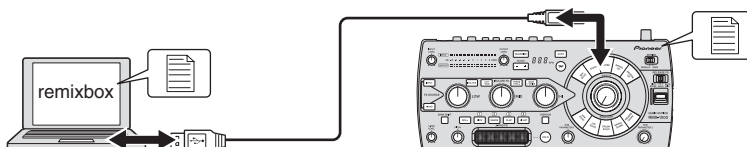
Loading the customized parameter data onto the RMX-1000

The customized parameter data created with remibox can be loaded onto the RMX-1000.

To load the customized parameter data, connect the computer and RMX-1000 directly using the USB cable.

The RMX-1000 on which the customized parameter data is loaded can be taken to a club and used for more personal DJ performances with your preferred settings.

The customized parameter data loaded on the RMX-1000 can also be imported to remibox.



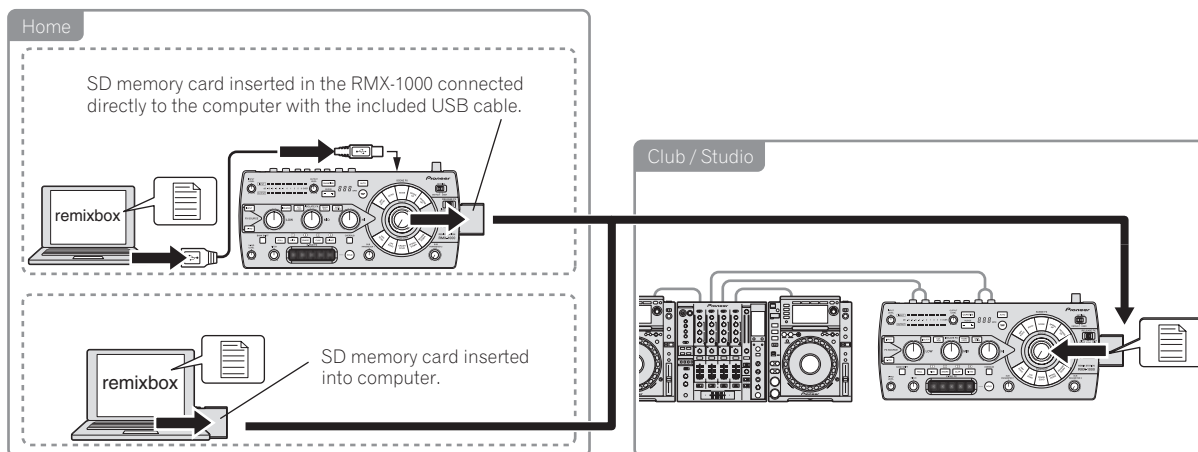
Loading the customized parameter data onto an SD memory card

The customized parameter data created with remibox can be loaded onto an SD memory card.

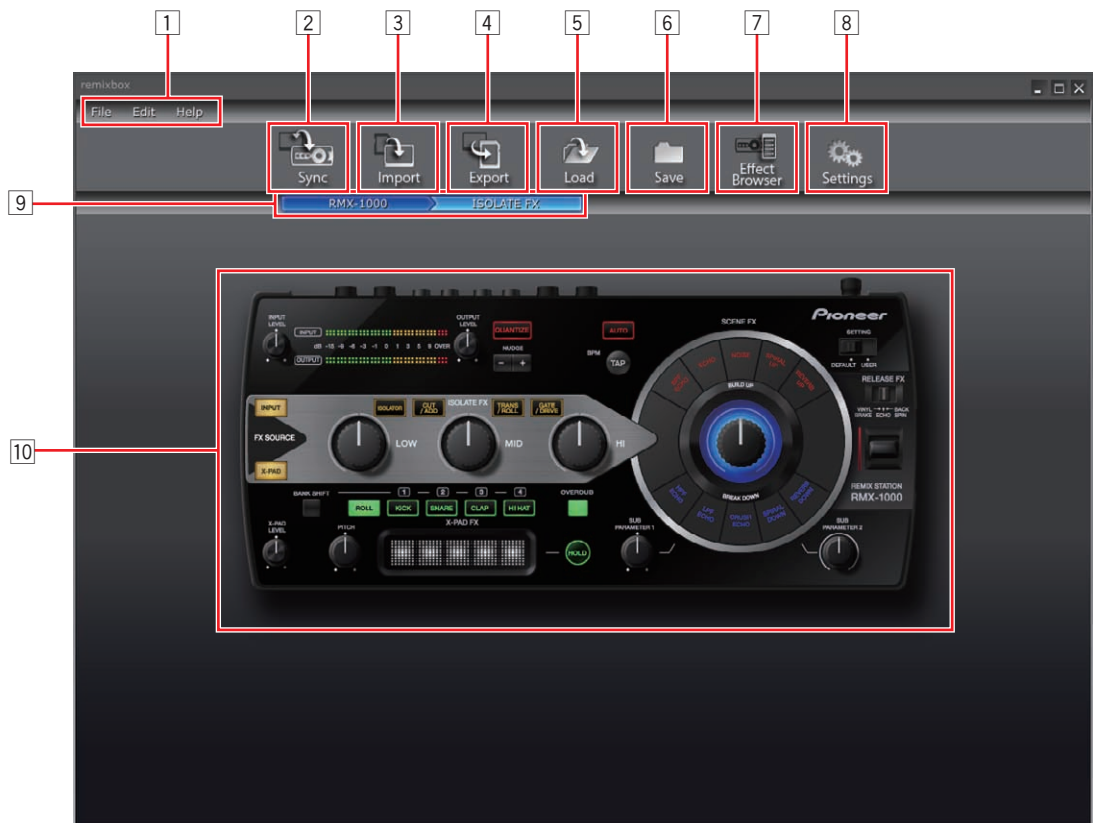
The SD memory card on which the customized parameter data is loaded can be taken to a club where an RMX-1000 is installed so you can load your preferred settings onto the club's RMX-1000 whenever you want.

The customized parameter data loaded on the SD memory card can also be imported to remibox.

The sampled sound sources to be loaded into the [X-PAD FX] buttons can also be stored on the SD memory card.



Part names and functions



1 Menu items

The menus are displayed here.

2 Sync button

This is used to load customized parameter data set with remixbox onto the RMX-1000.

- The [Sync] button can only be used when the computer and RMX-1000 are connected by USB cable.
- Sampled sound sources are not loaded.

3 Import button

This is used to import the customized parameter data and sampled sound sources exported onto an SD memory card with the [Export] button.

Customized parameter data and sampled sound sources can also be imported into remixbox from an SD memory card inserted into the computer or RMX-1000.

4 Export button

This is used to export the customized parameter data and sampled sound sources to an SD memory card inserted into the computer or RMX-1000.

- SD memory cards include a lock mechanism. Be sure to unlock it when using the SD memory card.

5 Load button

This is used to open RSD files saved using the [Save] button and load the customized parameter data.

If there is a sampled sound source folder in the same location as where the RSD file is stored, the sampled sound sources are also loaded.

- RSD is a file format exclusive to remixbox.
- RSD files include the customized parameter data and information on the file paths to the sampled sound sources' WAV files and on the playback start and end positions.

6 Save button

This is used to store the data in an RSD file in a specified location. When sampled sound sources are assigned to the sampler slots, the sampled sound sources are saved simultaneously.

7 Effect Browser button

This is used to switch the display of the effect browser on and off. With the effect browser, the effect parameter editing screen for a settable effect item can be opened instantaneously by clicking on the item.

8 Settings button

This is used to open the remixbox preference settings screen. The preferences set when remixbox is launched can be changed here.

9 Line browser

The level currently being edited is displayed here.

10 Effect select area

When the mouse cursor is over the effect whose parameters you want to edit, that effect section pops out. When clicked, the effect section is selected and the parameter settings screen appears. The current parameter values are displayed on the parameter settings screen.

- SCENE FX section (page 7)
- ISOLATE FX section (page 8)
- X-PAD FX section (page 9)
- RELEASE FX section (page 10)

Loading customized parameter data onto the RMX-1000 (Sync)

Use this procedure to load customized parameter data created with remixbox onto the RMX-1000.

1 Connect the RMX-1000 and computer by USB cable, then launch remixbox.

- The [Sync] button cannot be used unless the RMX-1000 and computer are connected by USB cable.

2 Create the customized parameter data on remixbox.

3 Click the [Sync] button.



The customized parameter data is loaded onto the RMX-1000. After loading, [Sync] appears on the RMX-1000's BPM display section. The loaded customized parameter data can be checked when the RMX-1000's [SETTING] selector switch is set to the [USER] side.

Importing customized parameter data loaded in the RMX-1000 (Update Setting)

Use this procedure to import the customized parameter data loaded in the RMX-1000 to remixbox.

1 Connect the RMX-1000 and computer by USB cable, then launch remixbox.

2 From remixbox's menu items, click [Edit]>[Update Setting].

The customized parameter data loaded in the RMX-1000 is imported to remixbox.

- When the RMX-1000 is shipped from the factory, the same parameters are loaded for the [DEFAULT] and [USER] modes.

Exporting the customized parameter data and sampled sound sources to an SD memory card (Export)

Use this procedure to export the customized parameter data and sampled sound sources created with remixbox to an SD memory card.

1 Insert the SD memory card into the RMX-1000 connected to the computer by USB cable.

- If the computer is equipped with an SD memory card slot, it is also possible to perform this procedure with the SD memory card inserted into this slot.

2 Create the customized parameter data and sampled sound sources on remixbox.

3 Click the [Export] button.



The [Export] window opens.

4 Select the type of data to be exported to the SD memory card.

5 Select the drive to which the SD memory card is connected.

6 Click the [OK] button.

The customized parameter data loaded on the SD memory card can be checked when the SD memory card is inserted in the RMX-1000 and the RMX-1000's [SETTING] selector switch is set to the [USER] side.

- The sampled sound sources can be used whether the [SETTING] selector switch is set to the [DEFAULT] or [USER] side.

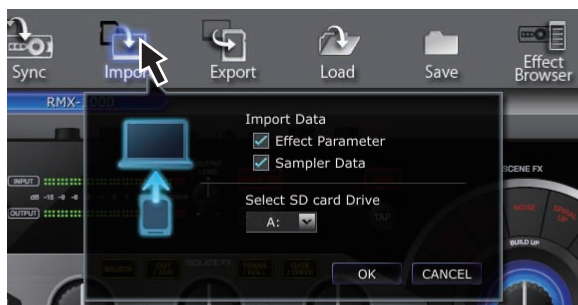
Importing customized parameter data and sampled sound sources from an SD memory card (Import)

Use this procedure to import the customized parameter data and sampled sound sources loaded on an SD memory card to remixbox.

1 Insert the SD memory card containing the customized parameter data and sampled sound sources into the RMX-1000 connected to the computer by USB cable.

- If the computer is equipped with an SD memory card slot, it is also possible to perform this procedure with the SD memory card inserted into this slot.

2 Click the [Import] button.



The [Import] window opens.

3 Select the type of data to be imported from the SD memory card.

4 Select the drive to which the SD memory card is connected.

5 Click the [OK] button.

The customized parameter data and sampled sound sources loaded on the SD memory card are imported to remixbox.

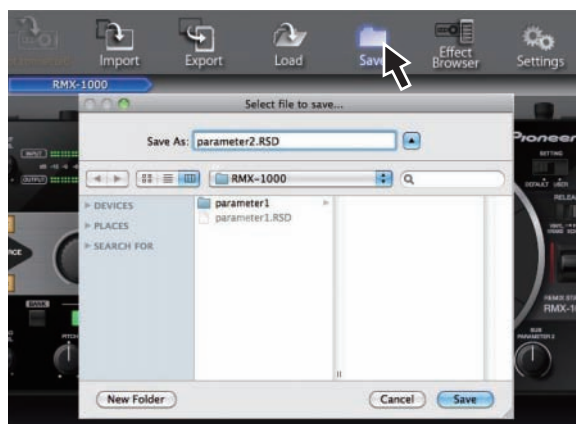
Managing the customized parameter data and sampled sound source

This procedure can be used to manage multiple sets of customized parameter data and sampled sound sources on the computer as RSD files.

Saving RSD files (Save)

1 Create the customized parameter data and sampled sound sources on remixbox.

2 Click the [Save] button.



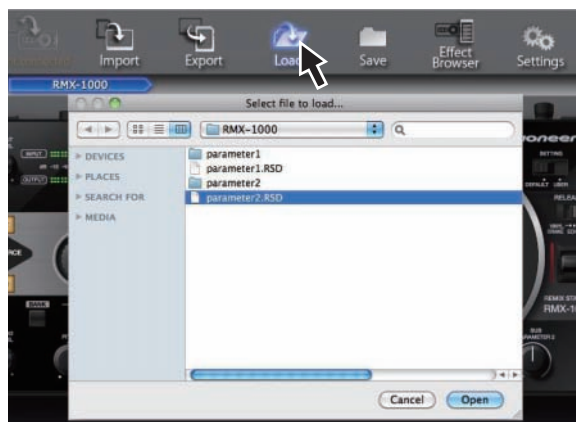
- For Windows: Explorer opens.
- For Mac OS X: Finder opens.

3 Select the location in which the RSD file is to be saved, give it the desired filename and save it.

- RSD files saved on SD memory cards by clicking the [Save] button cannot be imported to an RMX-1000. In this case, use the [Load] button to load the RSD file into remixbox, then either use the [Sync] button to load the data onto the RMX-1000 or use the [Export] button to export the data onto an SD memory card.

Loading RSD files (Load)

1 Click the [Load] button.



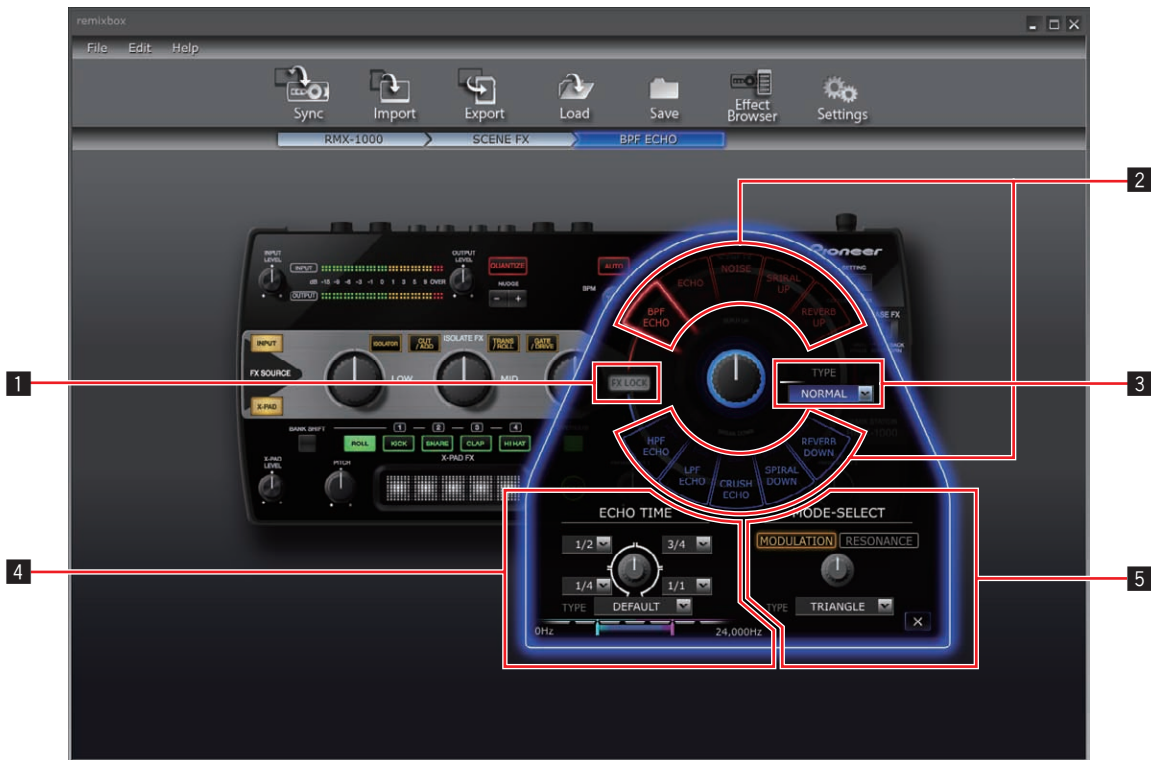
- For Windows: Explorer opens.
- For Mac OS X: Finder opens.

2 Select the RSD file and open it.

The customized parameter data and sampled sound sources in the RSD file are loaded into remixbox.

Editing Effects

SCENE FX section



• The contents displayed on the screen differ according to the effect type.

1 FX LOCK button

This is used to select whether or not to use the effect type selection buttons' accidental operation prevention function.

2 Effect type selection buttons

These are used to select the type of effect to be edited.

3 SCENE FX control section

This is used to adjust the [SCENE FX] control's parameters.

4 SUB PARAMETER 1 control section

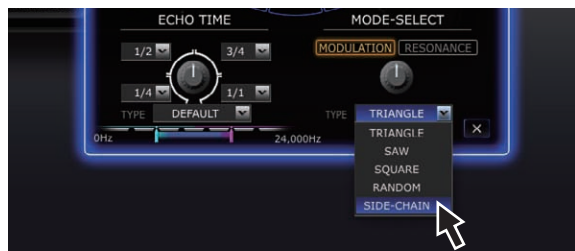
This is used to adjust the [SUB PARAMETER 1] control's parameters.

5 SUB PARAMETER 2 control section

This is used to adjust the [SUB PARAMETER 2] control's parameters.

2 Operate the pull-down menus, etc., to select the setting value.

Change the effect's parameters.



• For details on the parameters' adjustment range, see SCENE FX under *Effect parameter adjustment ranges* at 12.

Editing the parameters

1 Click one of the effect type selection buttons.

Select the type of effect to be edited.



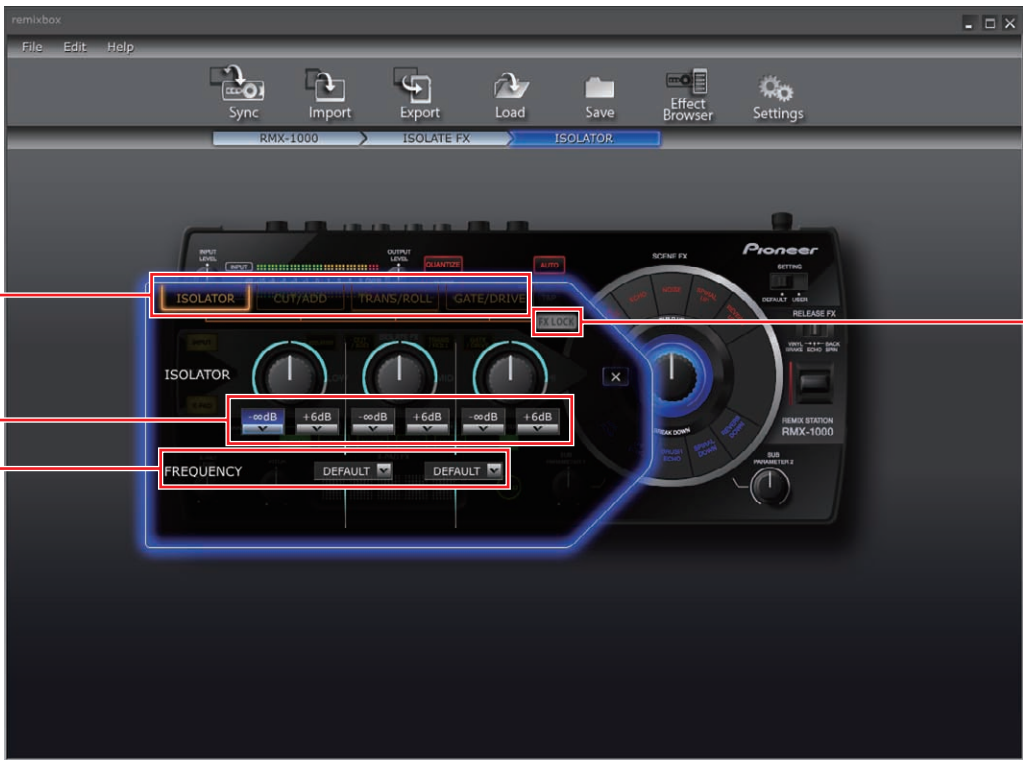
Using the effect type selection buttons' accidental operation prevention function

Click the [FX LOCK] button.

The [FX LOCK] button lights.

When the accidental operation prevention function is enabled, effects can be turned on and off by pressing and holding the effect type selection buttons on the RMX-1000.

ISOLATE FX section



The contents displayed on the screen differ according to the effect type.

1 Effect type selection buttons

These are used to select the type of effect to be edited.

2 ISOLATE FX control pull-down menus

These are used to adjust the parameters of the respective controls.

3 FREQUENCY pull-down menu

These are used to select the frequencies between the [LOW] and [MID] controls and between the [MID] and [HI] controls.

4 FX LOCK button

This is used to select whether or not to use the effect type selection buttons' accidental operation prevention function.

2 Operate the pull-down menus, etc., to select the setting value.

Change the effect's parameters.



- For details on the parameters' adjustment range, see *ISOLATE FX* under *Effect parameter adjustment ranges* at 13.

Editing the parameters

1 Click one of the effect type selection buttons.

Select the type of effect to be edited.



Using the effect type selection buttons' accidental operation prevention function

Click the [FX LOCK] button.

The [FX LOCK] button lights.

When the accidental operation prevention function is enabled, effects can be turned on and off by pressing and holding the effect type selection buttons on the RMX-1000.



- The contents displayed on the screen differ according to the type of item.

1 Parameter display section

The contents for editing the parameters are displayed here.

2 Item selection buttons

These are used to select the items to be edited.

- For instructions on **[SAMPLER]** editing, see *SAMPLER editing* on page 11.

Editing the parameters

1 Click one of the item selection buttons.

Select the item to be edited.



2 Operate the pull-down menus, etc., to select the setting value.

Change the item's parameters.



- For details on the parameters' adjustment range, see *X-PAD FX* under *Effect parameter adjustment ranges* at 14.

RELEASE FX section



1 Effect type selection buttons

These are used to select the type of effect to be edited.

2 Effect selection pull-down menu

Select individually whether or not the SCENE FX, ISOLATE FX and X-PAD FX effects continue when RELEASE FX is turned off (when the lever is set back to its original position).

3 RELEASE FX lever pull-down menu

This is used to adjustment the parameters when the lever is pulled.

Editing the parameters

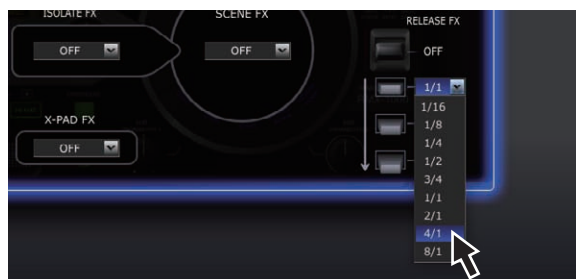
1 Click one of the effect type selection buttons.

Select the type of effect to be edited.



2 Operate the pull-down menus, etc., to select the setting value.

Change the effect's parameters.



- For details on the parameters' adjustment range, see *RELEASE FX* under *Effect parameter adjustment ranges* at 14.

SAMPLER editing

This procedure can be used to edit the sampled sound sources loaded in the RMX-1000's [X-PAD FX] buttons.

Prepare the sampled sound sources in WAV file format beforehand.

- When using rekordbox Version 1.5.3 or later, sampled sound sources can be prepared easily.
For details, see the rekordbox operating instructions.

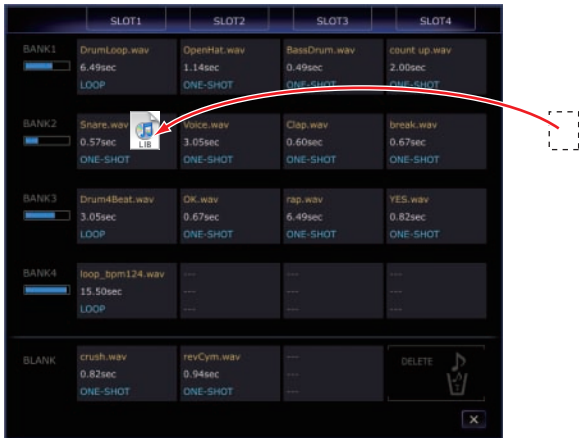
1 Open the parameter settings screen in the X-PAD FX section and click the [SAMPLER] button.

The sampler slot screen opens.



2 Drag the sampled sound sources to the sampler slots.

Open Finder when using Mac OS, Explorer when using Windows, and assign the sampled sound sources to the sampler slots.

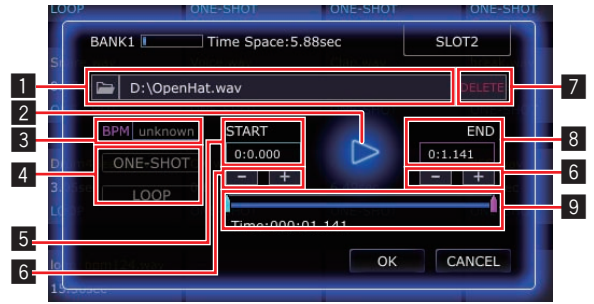


- Sampled sound sources can be deleted from the sampler slots by dragging them to [DELETE].
- The sampler slot details windows can also be used to assign the sampled sound sources to the sampler slots.
- The maximum length of the sampled sounds that can be set in the BANK (the total for the 4 SLOT) is 16 seconds.

About the sampler slot details windows

When a sampler slot is double-clicked, the sampler slot details window opens.

The sampler slot details windows can be used to listen to the sampled sound sources and set the playing range, loop mode, etc.



1 Editing box

When loading sampled sound sources from a computer, specify the sampled sound source's file path here.

2 ▶ button

This is used to play the sampled sound source. The sampled sound source is output from the audio device selected on the computer.

3 BPM

This is used to set the sampled sound source's BPM.

- BPM values between 70 and 200 are valid.

4 Playing mode selector buttons

These are used to switch the sampled sound source's playing mode.

- [ONE-SHOT] mode: The sampled sound source is played to the end then stops.
- [LOOP] mode: The sampled sound source is played to the end, then playback returns to the beginning and continues.

Only the sampled sound sources in [SLOT1] of the respective BANKS can be set to the [LOOP] mode.

If you switch to the [LOOP] mode, the BPM value must be input ahead of time.

5 START

The time of the sampled sound source's playback start position is displayed here.

6 -, + button

These are used to increase or decrease the sampled sound source's playing range in units of 10 msec (1/100th of a second).

7 DELETE button

This is used to delete the sampled sound source assigned to the sampler slot.

8 END

The time of the sampled sound source's playback end position is displayed here.

9 Slider

This is used to change the sampled sound source's playback start and end positions in large increments.

Effect parameter adjustment ranges

SCENE FX

Types of effects	Place	Position	Type	Adjustable parameters	Adjustable range	
HPF ECHO BPF ECHO LPF ECHO	Main control	Right	Pull-down menu	Filter pass width	NARROW, NORMAL, WIDE	
	SUB PARAMETER 1 control	Bottom left	Pull-down menu	Range 1 echo time beat	1/16, 1/8, 1/4, 1/2, 3/4, 1/1, 2/1	
		Top left	Pull-down menu	Range 2 echo time beat	1/16, 1/8, 1/4, 1/2, 3/4, 1/1, 2/1	
		Top right	Pull-down menu	Range 3 echo time beat	1/16, 1/8, 1/4, 1/2, 3/4, 1/1, 2/1	
		Bottom right	Pull-down menu	Range 4 echo time beat	1/16, 1/8, 1/4, 1/2, 3/4, 1/1, 2/1	
		Bottom	Pull-down menu	Feedback amount	MILD, DEFAULT, WILD	
	SUB PARAMETER 2 control	Bottom	Sliders x 2	Range to which echo is applied	LOW, DEFAULT, HI (settable for each slider.)	
		Top	Button	[SUB PARAMETER 2] type	MODULATION, RESONANCE	
	NOISE	Main control	Right	Pull-down menu	Filter pass width	MILD, DEFAULT, WILD
		SUB PARAMETER 1 control	Bottom left	Slider	Minimum value of noise's acoustic pressure level	-∞ dB, -18 dB, -12 dB, -6 dB
Bottom right			Slider	Maximum value of noise's acoustic pressure level	0 dB, +3 dB, +6 dB, +9 dB	
SUB PARAMETER 2 control		Top	Button	[SUB PARAMETER 2] type	MODULATION, RESONANCE	
		Bottom	Pull-down menu	[SUB PARAMETER 2] waveform/effect	TRIANGLE, SAW, SQUARE, RANDOM, SIDE-CHAIN (when MODULATION is selected) DEFAULT, MILD, NONE (when RESONANCE is selected)	
SPIRAL UP SPIRAL DOWN	Main control	Right	Pull-down menu	SPIRAL's delay time.	MILD, DEFAULT, WILD	
	SUB PARAMETER 1 control	Bottom left	Pull-down menu	Range 1 echo time beat	1/16, 1/8, 1/4, 1/2, 3/4, 1/1, 2/1	
		Top left	Pull-down menu	Range 2 echo time beat	1/16, 1/8, 1/4, 1/2, 3/4, 1/1, 2/1	
		Top right	Pull-down menu	Range 3 echo time beat	1/16, 1/8, 1/4, 1/2, 3/4, 1/1, 2/1	
		Bottom right	Pull-down menu	Range 4 echo time beat	1/16, 1/8, 1/4, 1/2, 3/4, 1/1, 2/1	
SUB PARAMETER 2 control	Bottom	Pull-down menu	Pitch variation type	LINEAR, KEY		
REVERB UP REVERB DOWN	Main control	Right	Pull-down menu	Room size	LARGE, SMALL	
	SUB PARAMETER 1 control	Bottom	Pull-down menu	Reverb time	SHORT, DEFAULT, LONG	
	SUB PARAMETER 2 control	Bottom	Pull-down menu	Filter type	LOW PASS FILTER, BAND PASS FILTER, HIGH PASS FILTER	
ECHO	Main control	Right	Pull-down menu	Echo feedback amount	HOLD, DJM	
	SUB PARAMETER 1 control	Bottom left	Pull-down menu	Range 1 echo time beat	1/16, 1/8, 1/4, 1/2, 3/4, 1/1, 2/1, 4/1, 8/1	
		Top left	Pull-down menu	Range 2 echo time beat	1/16, 1/8, 1/4, 1/2, 3/4, 1/1, 2/1, 4/1, 8/1	
		Top right	Pull-down menu	Range 3 echo time beat	1/16, 1/8, 1/4, 1/2, 3/4, 1/1, 2/1, 4/1, 8/1	
		Bottom right	Pull-down menu	Range 4 echo time beat	1/16, 1/8, 1/4, 1/2, 3/4, 1/1, 2/1, 4/1, 8/1	
	SUB PARAMETER 2 control	Bottom	Pull-down menu	Filter type	NARROW, NORMAL, WIDE	
CRUSH ECHO	Main control	Right	Pull-down menu	Echo depth (DEPTH)	MILD, DEFAULT, WILD	
	SUB PARAMETER 1 control	Bottom left	Pull-down menu	Range 1 echo time beat	1/16, 1/8, 1/4, 1/2, 3/4, 1/1, 2/1	
		Top left	Pull-down menu	Range 2 echo time beat	1/16, 1/8, 1/4, 1/2, 3/4, 1/1, 2/1	
		Top right	Pull-down menu	Range 3 echo time beat	1/16, 1/8, 1/4, 1/2, 3/4, 1/1, 2/1	
		Bottom right	Pull-down menu	Range 4 echo time beat	1/16, 1/8, 1/4, 1/2, 3/4, 1/1, 2/1	
		Bottom	Pull-down menu	Feedback amount	MILD, DEFAULT, WILD	
	SUB PARAMETER 2 control	Bottom	Pull-down menu	Modulation type	TRIANGLE, SAW, SQUARE, RANDOM, SIDE-CHAIN	

ISOLATE FX

Types of effects	Place	Position	Type	Adjustable parameters	Adjustable range	
ISOLATOR	LOW control	Bottom left	Pull-down menu	Minimum value of gain	-6 dB, -12 dB, -18 dB, -∞ dB	
		Bottom right	Pull-down menu	Maximum value of gain	0 dB, +3 dB, +6 dB, +9 dB	
		Between [LOW] and [MID] controls	Pull-down menu	Frequency between [LOW] and [MID] controls	LOW, DEFAULT, HI	
	MID control	Bottom left	Pull-down menu	Minimum value of gain	-6 dB, -12 dB, -18 dB, -∞ dB	
		Bottom right	Pull-down menu	Maximum value of gain	0 dB, +3 dB, +6 dB, +9 dB	
		Between [MID] and [HI] controls	Pull-down menu	Frequency between [MID] and [HI] controls	LOW, DEFAULT, HI	
	HI control	Bottom left	Pull-down menu	Minimum value of gain	-6 dB, -12 dB, -18 dB, -∞ dB	
		Bottom right	Pull-down menu	Maximum value of gain	0 dB, +3 dB, +6 dB, +9 dB	
CUT/ADD	LOW control	Bottom left	Pull-down menu	Amount by which bass drum sound is reduced	MILD, DEFAULT, WILD	
		Bottom right	Pull-down menu	Multi-tap delay pattern	PATTERN1, PATTERN2, PATTERN3	
	MID control	Bottom left	Pull-down menu	High pass filter resonance	OFF, ON	
		Bottom right	Pull-down menu	Multi-tap delay pattern	PATTERN1, PATTERN2, PATTERN3	
	HI control	Bottom left	Pull-down menu	Low pass filter resonance	OFF, ON	
		Bottom right	Pull-down menu	Multi-tap delay pattern	PATTERN1, PATTERN2, PATTERN3	
	TRANS/ROLL	LOW control	Bottom left	Pull-down menu	TRANS LFO pattern	PATTERN1, PATTERN2, PATTERN3
			Bottom right	Pull-down menu	ROLL beat number pattern	PATTERN1, PATTERN2, PATTERN3
		Between [LOW] and [MID] controls	Pull-down menu	Frequency between [LOW] and [MID] controls	LOW, DEFAULT, HI	
MID control		Bottom left	Pull-down menu	TRANS LFO pattern	PATTERN1, PATTERN2, PATTERN3	
	Bottom right	Pull-down menu	ROLL beat number pattern	PATTERN1, PATTERN2, PATTERN3		
	Between [MID] and [HI] controls	Pull-down menu	Frequency between [MID] and [HI] controls	LOW, DEFAULT, HI		
HI control	Bottom left	Pull-down menu	TRANS LFO pattern	PATTERN1, PATTERN2, PATTERN3		
	Bottom right	Pull-down menu	ROLL beat number pattern	PATTERN1, PATTERN2, PATTERN3		
GATE/DRIVE	LOW control	Bottom left	Pull-down menu	GATE depth	MILD, DEFAULT, WILD	
		Bottom right	Pull-down menu	DRIVE depth	MILD, DEFAULT, WILD	
	MID control	Bottom left	Pull-down menu	GATE depth	MILD, DEFAULT, WILD	
		Bottom right	Pull-down menu	DRIVE depth	MILD, DEFAULT, WILD	
	HI control	Bottom left	Pull-down menu	GATE depth	MILD, DEFAULT, WILD	
		Bottom right	Pull-down menu	DRIVE depth	MILD, DEFAULT, WILD	

X-PAD FX

Item selection buttons	Setting item 1	Setting item 2	Adjusted parameter	Adjustable range	
ROLL	—	—	[ROLL] button function	ROLL, SLIP ROLL, DIVIDE ROLL	
	KICK	GAIN	Gain	-3 dB, -2 dB, -1 dB, 0 dB, +1 dB, +2 dB, +3 dB	
		DECAY	Decay time	SHORT, DEFAULT, LONG	
		ENVELOPE	Envelope type	TYPE1, TYPE2	
	SNARE	GAIN	Gain	-3 dB, -2 dB, -1 dB, 0 dB, +1 dB, +2 dB, +3 dB	
		DECAY	Decay time	SHORT, DEFAULT, LONG	
		ENVELOPE	Envelope type	TYPE1, TYPE2	
	OSC	CLAP	GAIN	Gain	-3 dB, -2 dB, -1 dB, 0 dB, +1 dB, +2 dB, +3 dB
			DECAY	Decay time	SHORT, DEFAULT, LONG
ENVELOPE			Envelope type	TYPE1, TYPE2	
HI HAT		GAIN	Gain	-3 dB, -2 dB, -1 dB, 0 dB, +1 dB, +2 dB, +3 dB	
		DECAY	Decay time	SHORT, DEFAULT, LONG	
		ENVELOPE	Envelope type	TYPE1, TYPE2	
SAMPLER ¹		—	—	—	—
PITCH		Slider (left)	—	Pitch bend width in minus direction	From -1 SEMITONE to -12 SEMITONE
		Slider (right)	—	Pitch bend width in plus direction	From +1 SEMITONE to +12 SEMITONE
X-PAD	—	—	Layout of number of beats assigned to [X-PAD] ²	1/2, 2/3, 3/4, 1/1, 3/2, 2/1, 4/1, 8/1, 1/32, 1/24, 1/16, 1/12, 1/8, 1/6, 1/4, 1/3	

¹ For instructions on [SAMPLER] editing, see *SAMPLER editing* on page 11.

² Select the number of beats to be assigned to the [X-PAD] from the adjustable ranges and drag and drop it onto the [X-PAD].

RELEASE FX

Types of effects	Place	Position	Type	Adjustable parameters	Adjustable range
VINYL BRAKE	RELEASE FX lever	Bottom (upper tier)	Pull-down menu	Range 1 beat	1/4, 1/2, 3/4, 1/1, 2/1, 4/1, 8/1, 12/1, 16/1
		Bottom (middle tier)	Pull-down menu	Range 2 beat	1/4, 1/2, 3/4, 1/1, 2/1, 4/1, 8/1, 12/1, 16/1
		Bottom (bottom tier)	Pull-down menu	Range 3 beat	1/4, 1/2, 3/4, 1/1, 2/1, 4/1, 8/1, 12/1, 16/1
	ISOLATE FX	Center	Pull-down menu	Select whether or not to hold the ISOLATE FX effect when RELEASE FX is turned off.	OFF, ON
	SCENE FX	Center	Pull-down menu	Select whether or not to hold the SCENE FX effect when RELEASE FX is turned off.	OFF, ON
	X-PAD FX	Center	Pull-down menu	Select whether or not to hold the X-PAD FX effect when RELEASE FX is turned off.	OFF, ON
BACK SPIN	RELEASE FX lever	Bottom (upper tier)	Pull-down menu	Range 1 beat	1/2, 3/4, 1/1, 2/1, 4/1, 8/1, 12/1, 16/1, 32/1
		Bottom (middle tier)	Pull-down menu	Range 2 beat	1/2, 3/4, 1/1, 2/1, 4/1, 8/1, 12/1, 16/1, 32/1
		Bottom (bottom tier)	Pull-down menu	Range 2 beat	1/2, 3/4, 1/1, 2/1, 4/1, 8/1, 12/1, 16/1, 32/1
	ISOLATE FX	Center	Pull-down menu	Select whether or not to hold the ISOLATE FX effect when RELEASE FX is turned off.	OFF, ON
	SCENE FX	Center	Pull-down menu	Select whether or not to hold the SCENE FX effect when RELEASE FX is turned off.	OFF, ON
	X-PAD FX	Center	Pull-down menu	Select whether or not to hold the X-PAD FX effect when RELEASE FX is turned off.	OFF, ON
ECHO	RELEASE FX lever	Top	Pull-down menu	Echo feedback amount	HOLD, DJM
		Bottom (upper tier)	Pull-down menu	Range 1 beat	1/16, 1/8, 1/4, 1/2, 3/4, 1/1, 2/1, 4/1, 8/1
		Bottom (middle tier)	Pull-down menu	Range 2 beat	1/16, 1/8, 1/4, 1/2, 3/4, 1/1
		Bottom (bottom tier)	Pull-down menu	Range 3 beat	1/16, 1/8, 1/4, 1/2, 3/4, 1/1
	ISOLATE FX	Center	Pull-down menu	Select whether or not to hold the ISOLATE FX effect when RELEASE FX is turned off.	OFF, ON
	SCENE FX	Center	Pull-down menu	Select whether or not to hold the SCENE FX effect when RELEASE FX is turned off.	OFF, ON
	X-PAD FX	Center	Pull-down menu	Select whether or not to hold the X-PAD FX effect when RELEASE FX is turned off.	OFF, ON

Others

Menu list

Menu items	Description		
File	Load	Functions in the same way as the [Load] button.	
	Save	Functions in the same way as the [Save] button.	
	Settings	Functions in the same way as the [Settings] button.	
	Quit	Quits remixbox.	
Edit	Undo	Undoes the last parameter change made.	
	Redo	Restores the parameter change undone with the [Undo] command.	
	Sync	Functions in the same way as the [Sync] button.	
	Import	Functions in the same way as the [Import] button.	
	Export	Functions in the same way as the [Export] button.	
	Update Setting	Imports the customized parameter data loaded in the RMX-1000.	
	Effect Browser	Functions in the same way as the [Effect Browser] button.	
	Load Default Settings	Loads the factory default parameter data. The sampled sound source settings are not changed.	
	Launch rekordbox	Launches rekordbox installed on the computer.	
	Version	Displays the version information of remixbox and the RMX-1000 connected to the computer.	
Help	Manual	English	Opens the remixbox manual (in English).
		Français	Opens the remixbox manual (in French).
		Deutsch	Opens the remixbox manual (in German).
		Español	Opens the remixbox manual (in Spanish).
		Italiano	Opens the remixbox manual (in Italian).
		Nederlands	Opens the remixbox manual (in Dutch).
		Русский	Opens the remixbox manual (in Russian).
		Português	Opens the remixbox manual (in Portuguese).
		简体中文	Opens the remixbox manual (in simplified Chinese).
		繁體中文	Opens the remixbox manual (in traditional Chinese).
		한국어	Opens the remixbox manual (in Korean).
日本語	Opens the remixbox manual (in Japanese).		

About trademarks and registered trademarks

- Pioneer is a registered trademark of PIONEER CORPORATION.
- Microsoft®, Windows Vista®, Windows® and Internet Explorer® are either registered trademarks or trademarks of Microsoft Corporation in the United States and/or other countries.
- Apple, Macintosh, Mac OS, Safari, iTunes, and Finder are trademarks of Apple Inc., registered in the U.S. and other countries.
- Intel and Pentium are trademarks of Intel Corporation in the U.S. and other countries.

The names of companies and products mentioned herein are the trademarks of their respective owners.

This product has been licensed for nonprofit use. This product has not been licensed for commercial purposes (for profit-making use), such as broadcasting (terrestrial, satellite, cable or other types of broadcasting), streaming on the Internet, Intranet (a corporate network) or other types of networks or distributing of electronic information (online digital music distribution service). You need to acquire the corresponding licenses for such uses. For details, see <http://www.mp3licensing.com>.

Cautions on copyrights

Recordings you have made are for your personal enjoyment and according to copyright laws may not be used without the consent of the copyright holder.

- Music recorded from CDs, etc., is protected by the copyright laws of individual countries and by international treaties. It is the full responsibility of the person who has recorded the music to ensure that it is used legally.
- When handling music downloaded from the Internet, etc., it is the full responsibility of the person who has downloaded the music to ensure that it is used in accordance with the contract concluded with the download site.

Using the support site

Please read the remixbox's operating instructions before making inquiries about remixbox operating procedures and technical issues. Also check the RMX-1000 FAQ provided on the Pioneer DJ Global site.

<Pioneer DJ Global site>

<http://pioneerdj.com/support/>

- PIONEER CORPORATION collects your personal information for the following purposes:
 - 1 To provide customer support for your purchased product
 - 2 To inform you of product or event information by e-mail
 - 3 To obtain feedback collected by survey for product planning purposes
 - Your personal information is kept confidential corresponding to the privacy policy set forth by our company.
 - For Pioneer's privacy protection policy, see the Pioneer DJ Global site.
- When making inquiries regarding remixbox, please be sure to furnish your computer type and specifications (CPU, installed memory, other connected peripherals, etc.), the operating system and version used, as well as concrete information regarding the issue at hand.
 - To inquire about configuring your computer with non-Pioneer peripheral devices and to obtain the corresponding technical support, contact the specific manufacturer or retailer.
- Update programs will be available from the remixbox support site. We strongly recommend you upgrade your software on a regular basis to keep the latest updates on your system.

© 2012 PIONEER CORPORATION.

All rights reserved.

PIONEER CORPORATION

1-1, Shin-ogura, Saiwai-ku, Kawasaki-shi, Kanagawa 212-0031, Japan

<DRQ1001-A-EN>